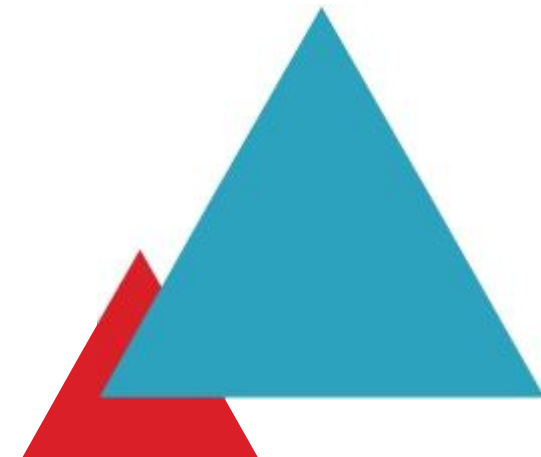




# Portable Power Station T200



# CONTENTS

- 1 **Introduction**
- 2 **How To Use**
- 3 **Application**
- 4 **Global Market**



# 01. Introduction

# T200-Pictures

## T200: With 200W AC Inverter



# T200-Dimension & Weight



**Length\*Width\*Height\*Total Height :**

210\*139\*123\*180MM

=8.27\*5.47\*4.84\*7.09Inch

**Product Weight:**

2.4KG

=5.3Lbs

# T200-Specifications

## **222Wh/200W Lithium Power Generator: T200**

- Battery: LithiumIon-222Wh
- Inverter: ModifiedSineWave-200W
- Input: AC Adapter+Car Charger+Solar Panel
- Output: AC110V/220V+DC12V+USB5V
- LED Light: Lighting/Blinking/SOS
- QC3.0 Quick Charge: v
- TypeC Output: v



# T200-Accessories



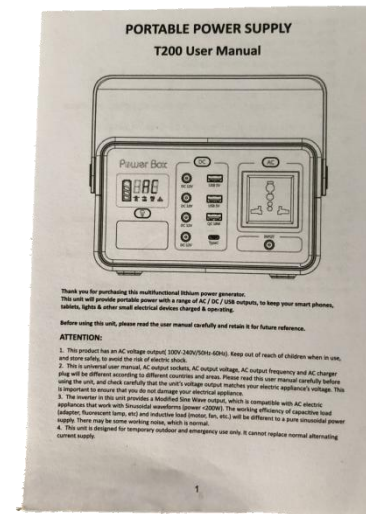
AC Adapter



Cigarette Lighter Adapter



Car Charger



User Manual

# T200-AC Sockets(MOQ500)

## Lithium Power Generator T200

### For Different Countries



**Australia**



**USA**



**Japan**



**Euro**



**UK**



### AC Sockets for Different Countries:

- USA Socket
  - Japanese Socket
  - European Socket
  - UK Socket
  - Australian Socket
  - Universal Socket
- (All sockets can be customized)



## T200-Various Colors(MOQ500)



**Standard Color: White+Black**

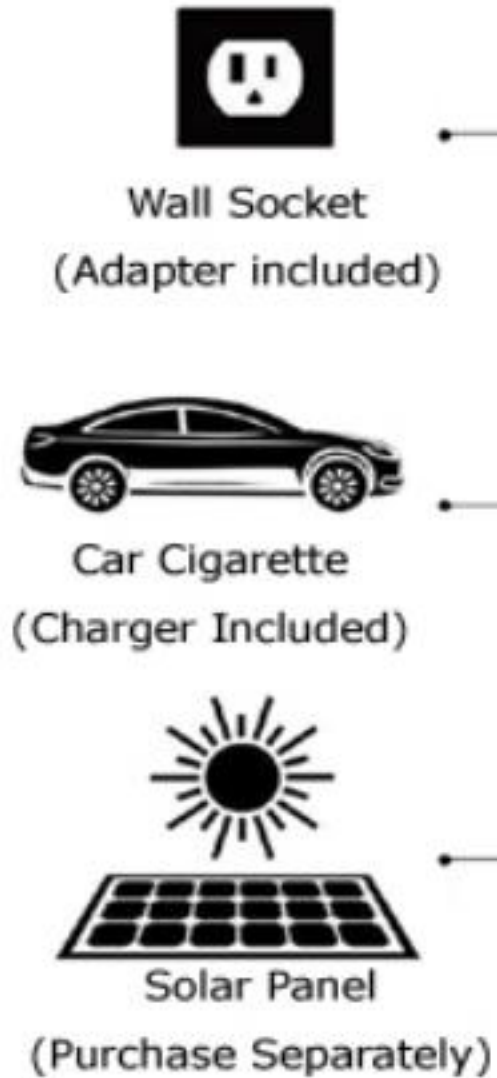
**Colors: can be customized upon your requirements**



# 02. How To Use

# T200-How To Charge?/Input

## 3 Ways to Recharge



## 3 Ways of Charging in

(1) AC Adapter: 15V3A

- Fully Charged Time: 7-8 hours

(2) Car Charger: 13.6V1.8A

- Fully Charged Time: 14 hours

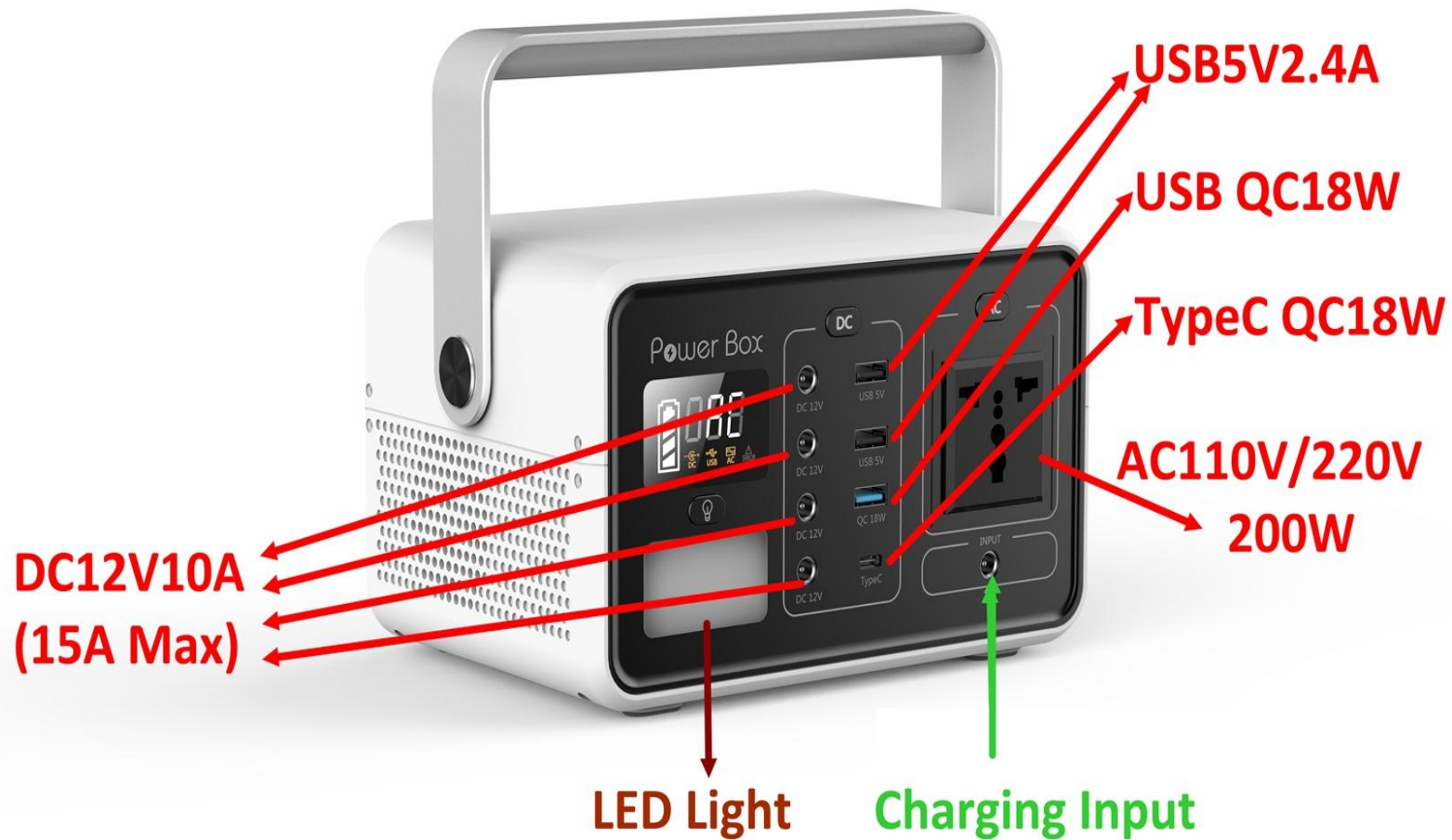
(3) Solar Panel: 16V 50W (Recommended)

- Fully Charged Time: 8 hours(Full Sun)

- Fully Charged Time: 14 hours(Normal≈2Days)

# T200-Multi-Functions

## Lithium Power Generator: T200



### Outputs:

- 1.AC: 200W 110V/220V
- 2.DC: 9-12.6V 10A (15A Max)
- 3.USB: 5V 2.4A
- 4.USB QC3.0: 18W
- 5.Type-C QC3.0: 18W

### Input:

15V3A

### LED Light:

Light/Blink/SOS

# T200-LED Lighting

## Lithium Power Generator T200: LED Flashlight



### LED Lighting

- Flashlight: 55.8hours
- Blink: 111.6hours
- SOS: 132hours

# T200-What Can it Do For You?

## Lithium Power Generator: T200 For home Appliances



Computer

180W



Light

10W



Car Vacuum cleaner

120W



Car Air Purifier

120W



Digital Devices

10-15W



Laptop

50W



Car Refrigerator

50W



Television

80W



Electric Fan

50W

It can charge for different devices:

### 1.AC Output:

- 60W 32" TV: 3hours+
- 60W Laptop: 3hours+
- 60W Standing Fan: 3hours+
- 40W CPAP: 4.7hours+
- Done: 3-5times

### 2.DC Output:

- 60W Car Fridge: 3hours+
- 60W Car Vacuum Cleaner: 3hours+
- 90W Car Air Compressor: 2hours+
- DC5W LED Bulbs: 37hours+
- 24W LED Tube: 7hours+

### 3.USB Output:

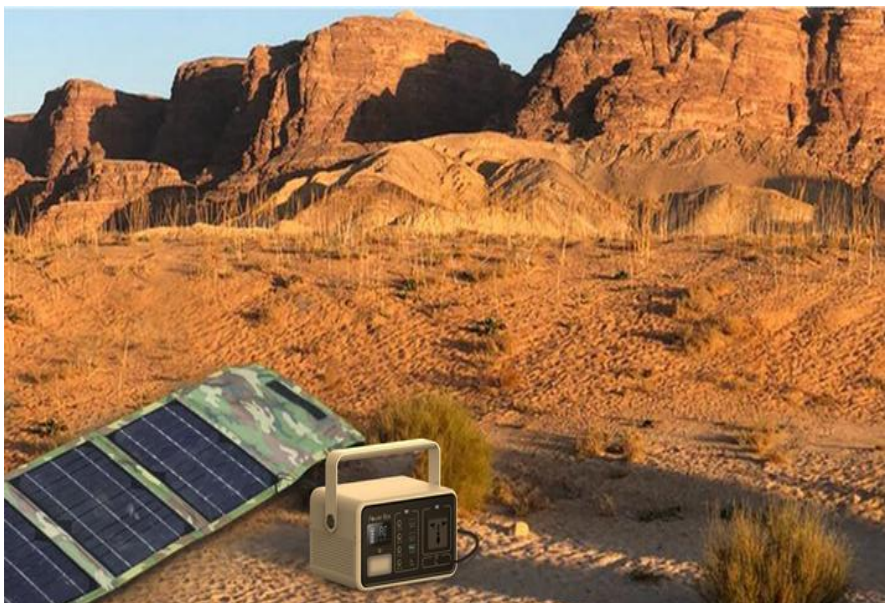
- Iphone 8-Plus: 15times+
- Ipad Pro: 6times+
- GoPro: 35times+
- Camera: 14times+
- Bluetooth Speaker: 50times+



# 03. Application



# T200-For Outdoor Activities



**Outdoor Activities:**  
Camping    Traveling  
Climbing    Fishing  
Hiking      Hunting  
Adventure    Business



# T200-For Caravan



**Caravan:**  
RV  
Camper Van  
Yacht



# T200-For Emergency Backup



**Emergency Backup:**  
Power Shortage  
Power Shut-Down  
Typhoon/Hurricane  
Earthquake/Disaster





# T200-For Night Market



**Night Market:**  
Street Vendor  
Night Market



**Night Market**



# T200-For CPAP/BIPAP



**CPAP/BIPAP:**  
CPAP  
Medical  
Rescue

# T200-For Drone/UAV

Application: for Drone/UAV Charging



**Drone/UAV:**  
Drone Charging  
Enthusiast Party

# T200-For Home Power



**Home Power:**  
Daily Power Supply  
Rural Area  
Remote Area  
Island



# 04. Global Market



# T200-Global Market



## Global Market:

Europe/North America/Australia: Outdoor Camping, Caravan, Hiking...

USA/Japan: Emergency backup

Africa/India: Power Failure, Home Power...

East-Asia: Street Business...





**THANK YOU**

