

# Introduction

OPS1200 Portable Power Station



**OPS1200**

**1098Wh**  
30000mAh

**1300W**  
Inverter

AC OUTPUT DC OUTPUT USB OUTPUT TYPE-C QC 3.0

CE FC UN38.3 MSDS

- Laptop
- Camera
- TV/Radio
- Car Fridge
- Fan
- CPAP

# Contents

1

OPS1200 Product Introduction

2

How To Use OPS1200

3

OPS1200 Applications



# OPS1200 Product Introduction



# OPS1200 Introduction



OPS1200 structure is based on a highly innovative design, It's an off-grid portable battery system, also called portable solar generator/energy storage system/power box/AC power bank, etc.

It can help you easily get rid of power shortage, enjoy freedoms of electricity.

- It's used for charging your electronic equipments whenever you need power.
- It's small and mobile, you can carry it to everywhere

# OPS1200 Product Introduction

## Battery & Inverter & Controller

Battery Type: lithium ion batteries

Capacity: 300000mAh, 3.66V/1098Wh

Inverter: Pure Sine Wave

BMS Battery System

## Input

1×DC7909 Input: Adapter 5-28V/6A

1×Anderson Input: 18V/6A

Fully Charged Time: Adapter: 7-8h

## Input

1×USBC: PD100W

Fully Charged Time: Adapter: 12- 13 hours



## Output

AC: Rated Power 1200W; Peak Power 2400W  
(100V-220V/50Hz-60Hz; can be customized)

DC: 3\*DC5521: 12-13V/10A

2×USB-A: 5V/2.1A

2×USB-A: QC3.0, 18W

1×TYPE-C Input/Output: PD 100W

1×TYPE-C Output: PD 100W

2×Cigar Lighter: 12-13V/10A

1×WIRELESS Output: 15W

## Size

Dimensions: 338x247x245 mm

Weight: about 11.6KG

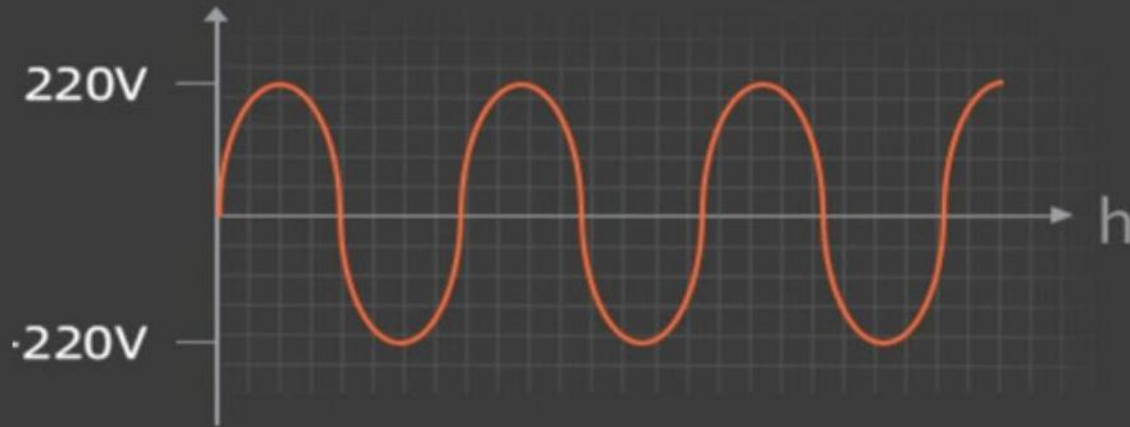
# OPS1200 Specifications



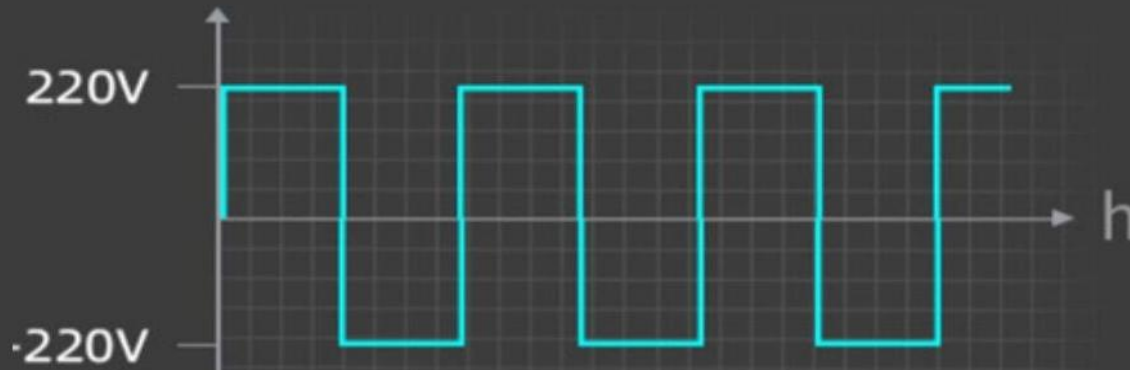
Model	OPS1200 Portable Generator	
Battery capacity	300000mAh, 3.66V=1098Wh	
Battery type	21700 Lithium - ion battery	
Inverter	Pure sine wave 1300W	
Fully charged time	DC7909 5-28V/6A: 7-8 Hour	Anderson 18V/6A 11-12 hour
Input recharging	Adaptor:5-20-8V/6A MAX USB: PD100W Solar panel: MPPT, 20V, 5A	
DC Input	1*DC7909:5-28V/6A	
AC output	Ratedpower:1200W Peak power:24000W 110V-220V,50Hz-60Hz (can be customizable)	
Output	3*DC5521:12-13V/10A      2×USB-A: 5V/2.1A 2×USB-A: QC3.0, 18W    1×TYPE-C Output: PD 100W 1×TYPE-C Input/Output: PD 100W 2×Cigar Lighter: PD 27W    1×Wireless Output: 15W	
11W Flashlight	Three kinds of brightness LED light /Strobe /SOS	
Power indicator	LCD control panel	
Lifecycle	>500 cycles	
Size W*D*H	338x247x245 mm	
Weight	About 11.6Kg	
Charge method	AC/DC	
What's in the box	1xportable power station , 1x power adapter , 1x user manual	
Solor panel(purchase separately)	100W	

# Pure Sine Wave

Pure sine wave that can protect your body and your electronic products.

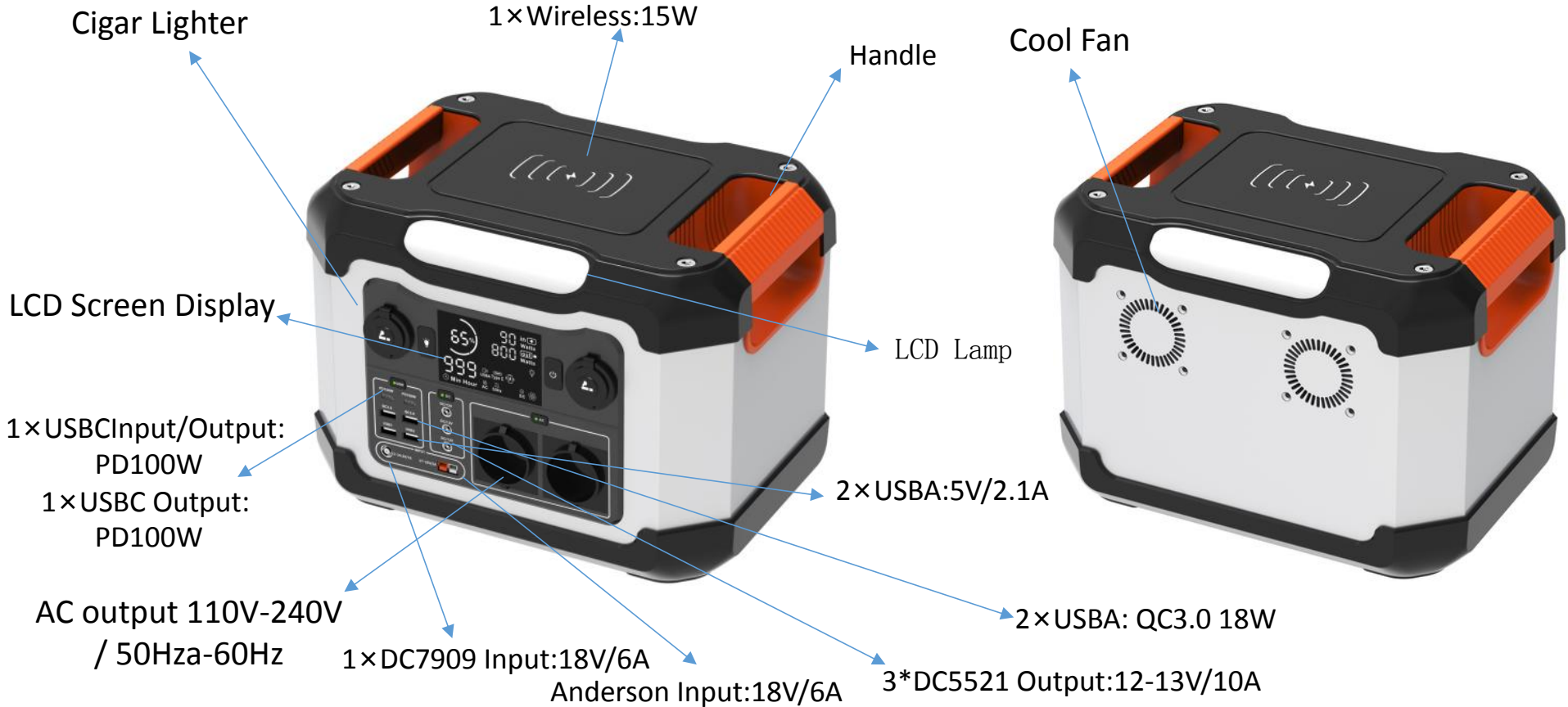


**Pure Sine Wave**



**Modified Sine Wave**

# OPS1200 Specifications





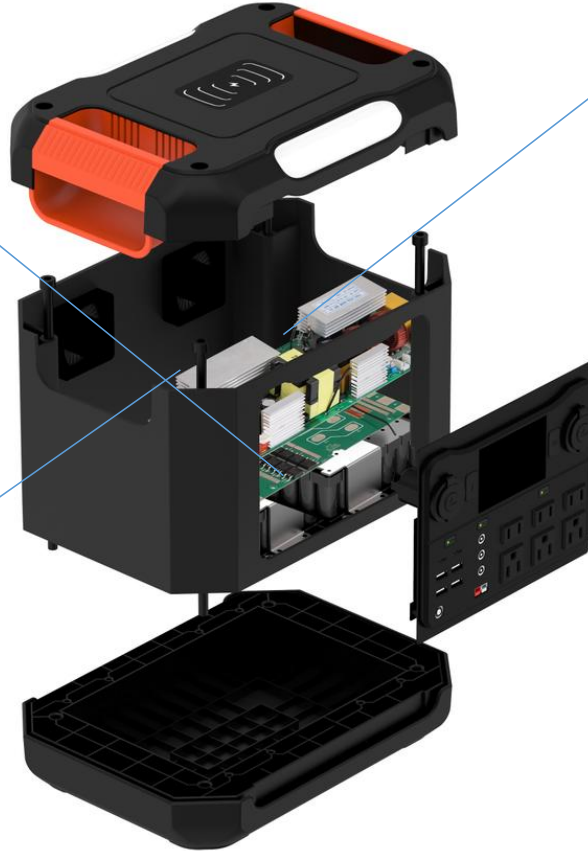
# OPS1200 structure

## 1. BMS Battery System

MCU Solution: TI, Renesas

Function:

- Over-Current Protection
- Over-charge Protection
- Over-discharge Protection
- Temperature Protection
- Balanced battery capacity



## 2. Inverter

MCU Solution: ST, Microchip

Function: DC To AC

## 3. Control board

Master chip: , MCU-ST, DCDC

Function:

Support 100W Input and Output

# Why FOXSKY-S strengths



--TECHNICAL

Solution



MPPT Charging

Inverter



MCU、DSP、PLC

Remote monitor



BMS

Thermal Control



Non-standard auto. Device

# OPS1200 Specifications

- ☆ AC Socket: Can be customized according to different countries/areas.
- ☆ Color: Can be customized according requirement.



# Key Features

1. It has an 300,000mAh battery capacity which can charge multiple devices simultaneously

2. A built-in BMS system that protects the battery against overcurrent and overvoltage

3. It weighs only 11.6KG and has an ergonomic handle for portability

4. It has an big LED Camping light, Quick/Slow flash, Weak/Strong Light/SOS Multifunction

5. USBC PD100W Input and Output

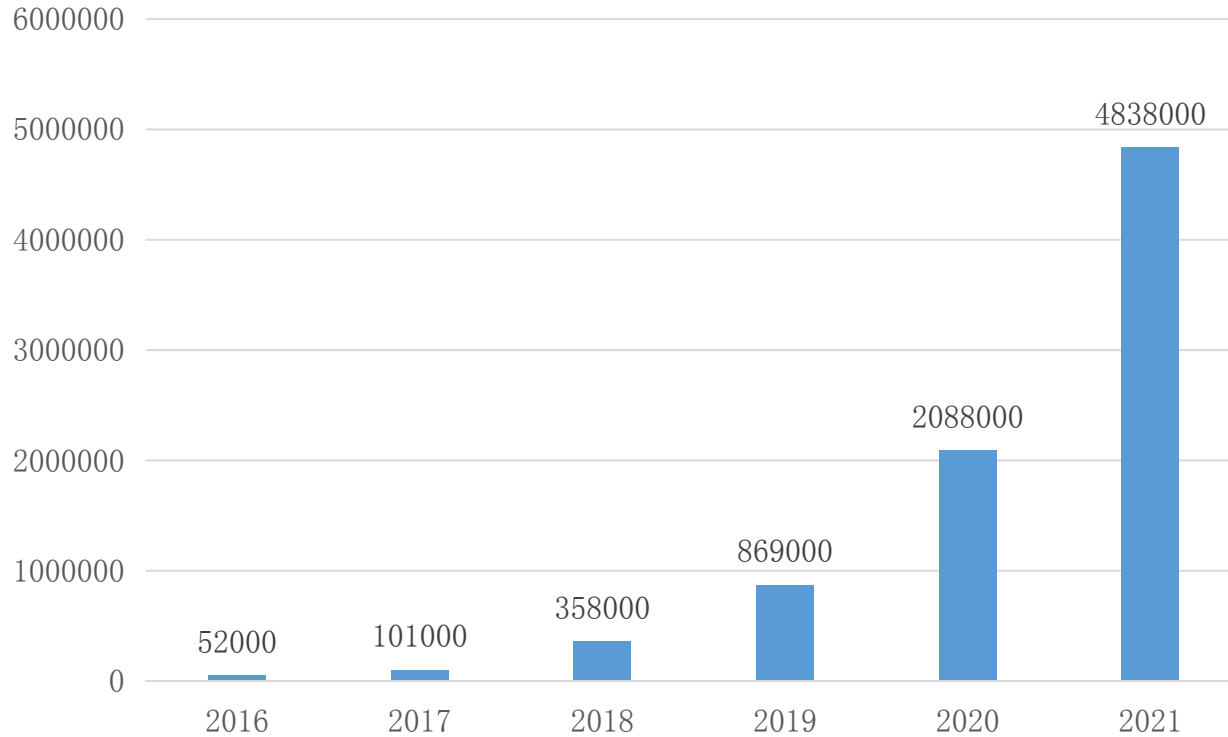
6. It has a built-in power inverter that ensures quiet operation

7. A multifunctional LCD screen that indicates the remaining energies such as charge, discharge, and AC output status

8. Up to 5 recharging modes, which include AC wall adapter, USBC Input, and solar panel

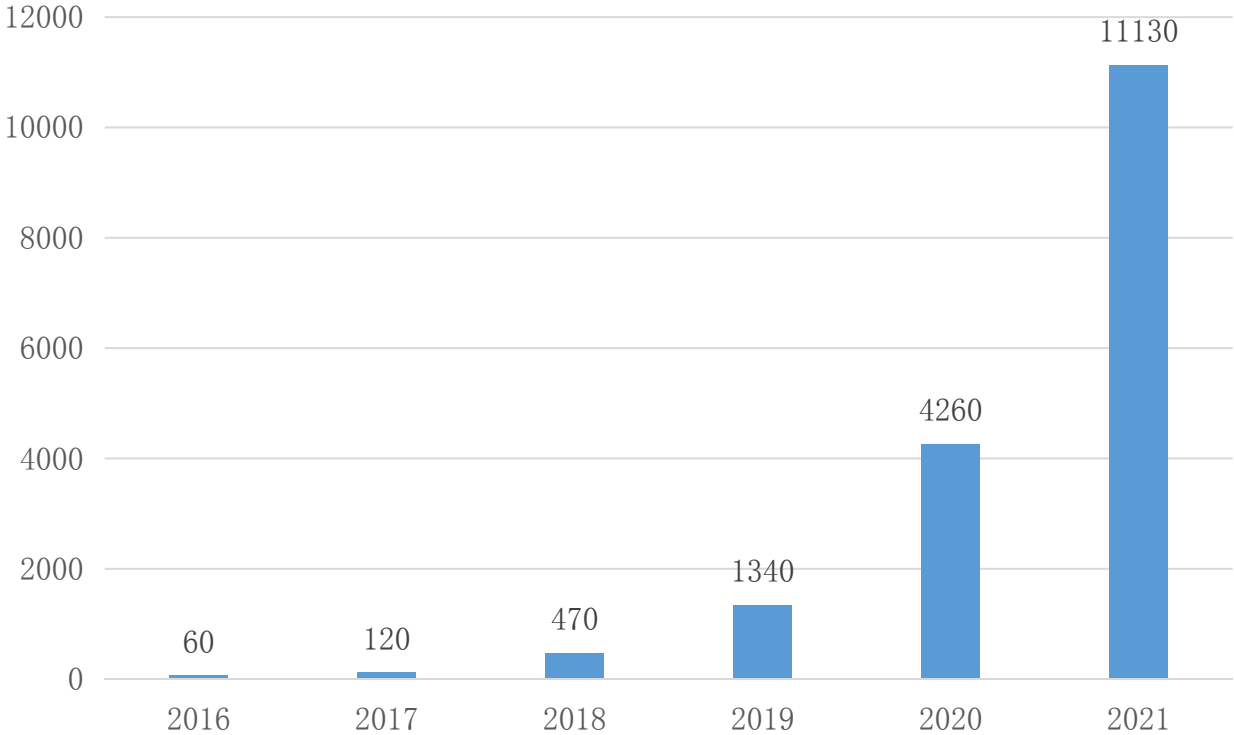


# Portable Power Station market



■ 2016-2021 Global portable power station shipments : Units (pcs)

# Portable Power Station market



■ 2016–2021 Global portable power station market scale : Million (CNY)

# OPS1200 Certifications

OPS1200 are with CE(European), PSE(Japan), FCC(America) certificates. moreover, ROHS reports for environment-friendly materials, MSDS, UN38.3 reports for global shipment transportation.

**CE TCT**  
**Certificate of Compliance**

Certificate No. : TCT210113E011C-1

Applicant : Shenzhen Fudeng Technology Co., Ltd.  
4th Floor, Unit C, Building 1, Rongrong Science and Technology Park,  
No. 13, Shuitan 1st Road, Tongle Community, Baoqing Street, Longgang District, Shenzhen

Manufacturer : Shenzhen Fudeng Technology Co., Ltd.  
4th Floor, Unit C, Building 1, Rongrong Science and Technology Park,  
No. 13, Shuitan 1st Road, Tongle Community, Baoqing Street, Longgang District, Shenzhen

Product : Portable Outdoor Power Station

Model No. : OPS-300

Trade mark : N/A

The above products have been tested by us with listed standards and found in compliance with the council EMC 2014/30/EU. It is possible to use CE marking to demonstrate the compliance with this EMC.

Test standards:	Report(s) Number	Issued By	Issued Date
EN 60932:2016 EN 61000-3-2:2014 EN 61000-3-3:2013 EN 60938:2017	TCT210113E011-1	TCT	Feb. 23, 2021

The statement is based on a single evaluation of one sample of above mentioned products. It does not imply an assessment of the whole production and does not permit the use of the test lab logo.

**CE**   
Tomsin  
Tomsin/Gentor Engineer  
Feb. 23, 2021

Shenzhen TCT Testing Technology Co., Ltd.  
Hotline: 400-6611-140 Tel: 86-755-27673339 Fax: 86-755-27673332 Http://www.tct-lab.com

**FCC TCT**  
**Supplier Declaration of Conformity**

TCT210113E010C-1  
This declaration that the following designated product

Portable Outdoor Power Station  
Model No: OPS-300

(Product Identification)  
It is herewith confirmed and found to comply with the requirements set up by regulation for the evaluation of electromagnetic compatibility.  
This device complies with part 15 of the FCC rules. Operation is subject to the following two conditions:  
(1) this device may not cause harmful interference, and  
(2) this device must accept any interference received, including interference that may cause undesired operation.

This declaration is the responsibility of the manufacturer/importer

Shenzhen Fudeng Technology Co., Ltd.  
4th Floor, Unit C, Building 1, Rongrong Science and Technology Park, No. 13, Shuitan 1st Road,  
Tongle Community, Baoqing Street, Longgang District, Shenzhen

Identification of regulation: 47 CFR, Part 15 Subpart B Class B, Measurement Procedure:  
ANSI C63.4: 2014. It is only valid in connection with the test report number: TCT210113E010-1.

**TEST LABORATORY**  
This is the results of test that was carried out from the submitted sub-samples of a product in conformity with the specification of the respective standards.

**FC**   
Authorized Signer:   
Tomsin/Gentor Engineer  
Date: Feb. 23, 2021  
This declaration is only valid for the equipment and configuration described, in conjunction with the test data described above.

Shenzhen TCT Testing Technology Co., Ltd.  
Hotline: 400-6611-140 Tel: 86-755-27673339 Fax: 86-755-27673332 Http://www.tct-lab.com

**PSE TCT**  
**Certificate of Compliance**

Certificate No. : TCT2103030014C

Applicant : Shenzhen Fudeng Technology Co., Ltd.  
Address : 4th Floor, Unit C, Building 1, Rongrong Science and Technology Park, No. 13, Shuitan 1st Road, Tongle Community, Baoqing Street, Longgang District, Shenzhen

Manufacturer : Shenzhen Fudeng Technology Co., Ltd.  
Address : 4th Floor, Unit C, Building 1, Rongrong Science and Technology Park, No. 13, Shuitan 1st Road, Tongle Community, Baoqing Street, Longgang District, Shenzhen

Product : Power Station

Model No. : OPD-300

Trademark : N/A

This is to certify that on the basis of the tests undertaken as per Report No. TCT2103030014 the submitted sample of the above item complies with:  
J86688-2-0(H427)  
J86688-10(H28)

And fulfills the Electrical Appliance and Material Control Law. It is possible to use PSE marking to demonstrate the compliance with this law.

**PS E**   
Date of issue: Mar. 26, 2021

  
Tomsin, Chief Engineer

Shenzhen TCT Testing Technology Co., Ltd.  
Hotline: 400-6611-140 Tel: 86-755-27673339 Fax: 86-755-27673332 Http://www.tct-lab.com

**RoHS TCT**  
**Certificate of Compliance**

Certificate No. : TCT210106C020C

Applicant : Shenzhen Fudeng Technology Co., Ltd.  
Address : 4th Floor, Unit C, Building 1, Rongrong Science and Technology Park, No. 13, Shuitan 1st Road, Tongle Community, Baoqing Street, Longgang District, Shenzhen

Manufacturer : Shenzhen Fudeng Technology Co., Ltd.  
Address : 4th Floor, Unit C, Building 1, Rongrong Science and Technology Park, No. 13, Shuitan 1st Road, Tongle Community, Baoqing Street, Longgang District, Shenzhen

Product : Portable Outdoor Power Station

Tested Model : OPS-300

Trade mark : N/A

The above products have been tested by us with listed standards and found in compliance with the Directive (EU) 2015/863 - Amendment of EU RoHS Directive 2011/65/EU (RoHS 2.0) Annex II. It is possible to use CE marking to demonstrate the compliance with this RoHS.

Test standards:	Report(s) Number	Issued By	Issued Date
IEC 62321-3-1:2019 IEC 62321-4:2019-AMD1:2017 IEC 62321-6:2016 IEC 62321-7-1:2016 IEC 62321-7-2:2017 IEC 62321-8:2017	TCT210106C020	TCT	Mar. 31, 2021

The statement is based on a single evaluation of one sample of above mentioned products and it is only valid in connection with the report number above. It does not imply an assessment of the whole production and does not permit the use of the test lab logo.

**CE** **RoHS Tested**   
Tomsin  
Tomsin/Gentor Engineer  
Mar. 31, 2021

Shenzhen TCT Testing Technology Co., Ltd.  
Hotline: 400-6611-140 Tel: 86-755-27673339 Fax: 86-755-27673332 Http://www.tct-lab.com

# OPS1200 Accessories & Packing

## OPS1200- Packing

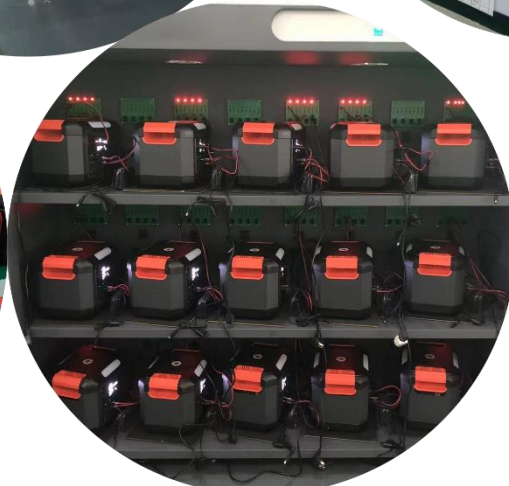
Product Size	<b>338*245*247mm</b>		
Product Weight	<b>11.6kg</b>		
Color Box Size	<b>397*300*335mm</b>		
Weight/Set	<b>12.5KG</b>		
Quantity/Carton	<b>1pcs/ctn</b>		
UN Carton Size	<b>405*305*340mm=0.042CBM</b>		
New Weight/Carton	<b>11.6kg</b>		
Gross Weight/Carton	<b>12.5KG</b>		
<b>1CBM=23 cartons= 23pcs</b>			
20GP= 644 carton= 644pcs			
40GP= 1334 cartons=1334pcs		<b>What's In The Box</b>	
40HP= 1564 cartons= 1564pcs			<b>Power Station*1</b> <b>AC Adapter*1</b> <b>User Manual*1</b>








# Power Station Produce





## How To Use OPS1200

# How To Use OPS1200



It is a plug-and-play machine, just need to plug the power cable of your devices into the socket of OPS1200, then long press the button to turn it on

11W LCD flashlight function:  
There are five models of lighting

When flashlight in off status  
Long press the light switch: Turn on the light (50%)  
Press it again: Adjust the brightness (70%)  
Press it again: Adjust the brightness (100%)  
Press it again: go into SOS mode  
Press it again: go into flash mode  
Press it again: Turn off the light

# OPS1200- What can it do for you?

## Lithium Power Generator: OPS1200 For home Appliances



It can charge for different devices:

### 1. AC Output:

- 60W 32" TV: 19hours+
- 60W Laptop: 19hours+
- 60W Standing Fan: 19hours+
- 40W CPAP: 26hours+
- 50W Drone: 21-22times

### 2. DC Output:

- 60W Car Fridge: 19hours+
- 60W Car Vacuum Cleaner: 19hours+
- 90W Car Air Compressor: 11hours+
- DC5W LED Bulbs: 215hours+
- 24W LED Tube: 45hours+

### 3. USB Output:

- Iphone 8-Plus: 73times+
- Ipad Pro: 28times+
- GoPro: 171times+
- 15W Camera: 71times+
- Bluetooth Speaker: 243times+

# How To Recharge OPS1200

## 4 Ways to Recharge



1- Recharge from AC Adapter:  
within 7-8 hours

2- Recharge from Car Port:  
within 9-10 hours

3- Recharge from USBC Port 100W:  
within 11-12 hours (in full sun)

3- Recharge from Solar Panel 40W:  
within 11-12 hours (in full sun)



# What We Do

## Handy Power



OPS150

AC Out: 150W  
Capacity: 115.2WH



OPS200

AC Out: 200W  
Capacity: 172.8WH



OPS300

AC Out: 300W  
Capacity: 288WH



OPS600

AC Out: 600W  
Capacity: 576WH



OPS1200

AC Out: 1200W  
Capacity: 1098WH



## OPS1200 Applications



# What can OPS1200 do for you?



## Provide Power To A Wide Range of AC Devices(rated under 1300W)

TV, Projectors, Standing Fan, Laptop, Small Fridge, Camera, Small Blenders, Pellet Smoker, etc



## DC & USB Devices

DC Fan, DC LED Bulbs, Smartphones, Tablets, Laptop, CPAP, Drones, Camping Lights, etc



## DC-Cigarette Lighter Port for Car Appliances

Car Coolers, Air Pumps, Car Vacuums, Car Rice Cooker, Car Air Purifier, etc





# OPS1200-For Outdoor Activities



Outdoor Activities:

Camping      Traveling

Climbing      Fishing

Hiking              Hunting

Adventure      Business

# OPS1200-For Caravan



Caravan:  
RV  
Camper Van  
Yacht

# OPS600–For Emergency Backup



Emergency Backup:

Power Shortage

Power Shut-Down

Typhoon/Hurricane

Earthquake/Disaster



Night Market:  
Street Vendor  
Night



Drone/UAV:  
Drone Charging  
Enthusiast Party



Market  
CPAP/BIPEP:  
CPAP  
Medical  
Rescue



Home Power:  
Daily Power Supply  
Rural Area  
Remote Area  
Island

## FAQ



01

### About OPS1200 Safety

- 1- Over-Voltage Protection
- 2- Over-Current Protection
- 3- Over-charge Protection
- 4- Over-discharge Protection
- 5- Short-Circuit Protection
- 6- Over-Load Protection
- 7- Over-Temperature Protection
- 8- Electrostatic protection
- 9- Power protection

**What devices can OPS1200 power for?**

Working time =  $1098\text{Wh} * 0.90 /$   
operating power of your device.

02

03

**What devices can OPS1200 power for?**

Please note that the AC output port can only charge/power devices that operate at less than 1300-Watt.

# OPS1200-Global Market



Europe



North America

Asia

Africa



Australia



South America



# Thank you!



**OPS1200**

1098Wh  
30000mAh

1300W  
Inverter

AC OUTPUT DC OUTPUT USB OUTPUT TYPE-C QC 3.0

CE FC UN38.3 MSDS



Laptop



Camera



TV/Radio



Car Fridge



Fan



CPAP